



ALUMNI SURVEY RESULTS

Number of people, who received the survey	103
Number of people, who completed the survey	87

1. Name Surname

.....

2. Entry year to Environmental Engineering Department

.....

3. Term and year of graduation from ITU Environmental Engineering Department

.....

4. Work address

.....

5. E-mail

.....

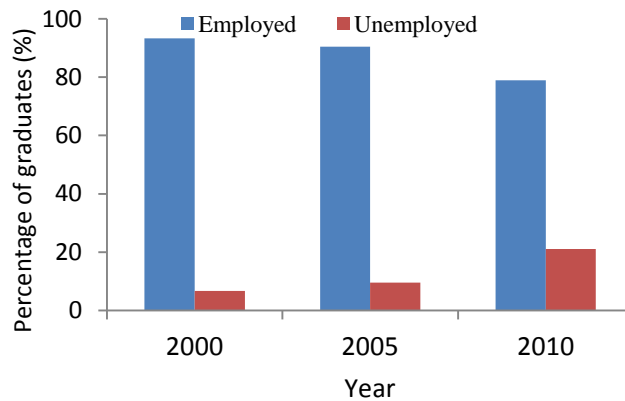
6. Work phone

.....

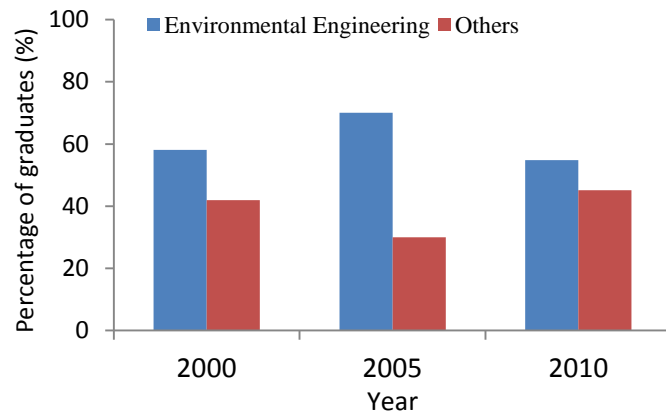
7. Mobile phone

.....

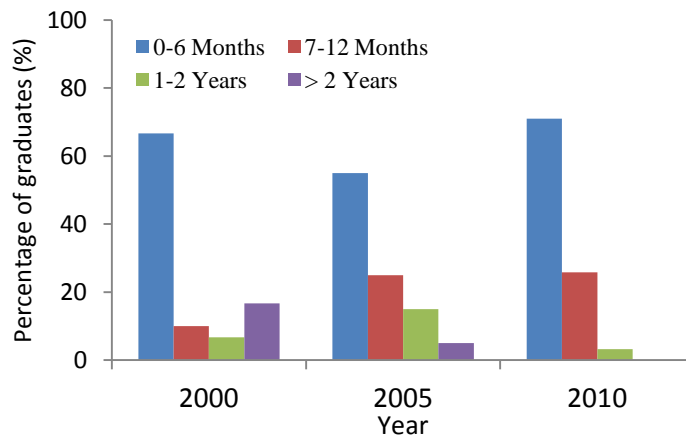
8. After graduation, did you work as a professional in Environmental Engineering or in any other area? (If your answer is “No” please pass to the question 16)



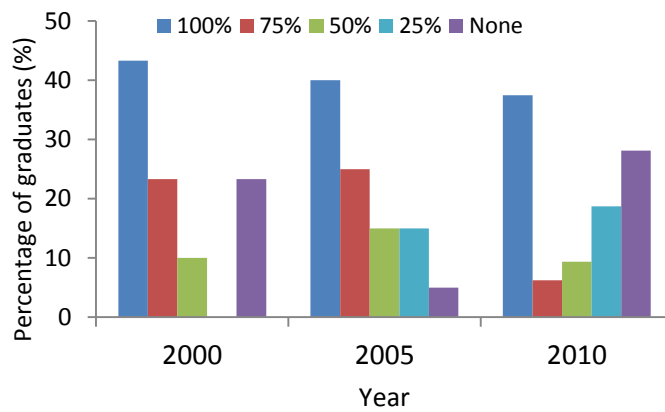
9. Was your first job after graduation in Environmental Engineering or in a related area?



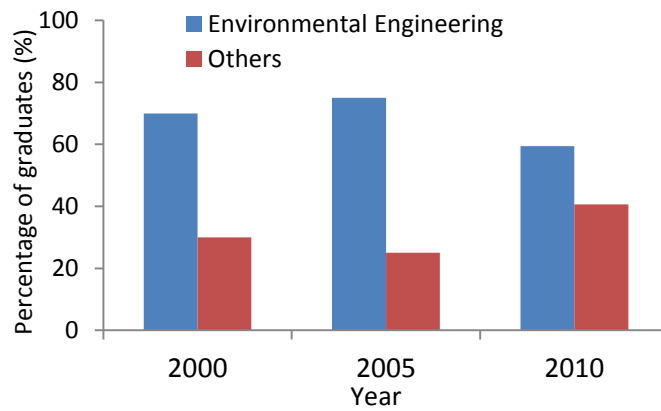
10. When did you find your first job after graduation?



11. Which of the following corresponds to the ratio of your working period in an area related to Environmental Engineering to your total working period?



12. Do you continue your career as a professional in Environmental Engineering or in a related area? (If you answer “No” to this question, please pass to the question 22.)



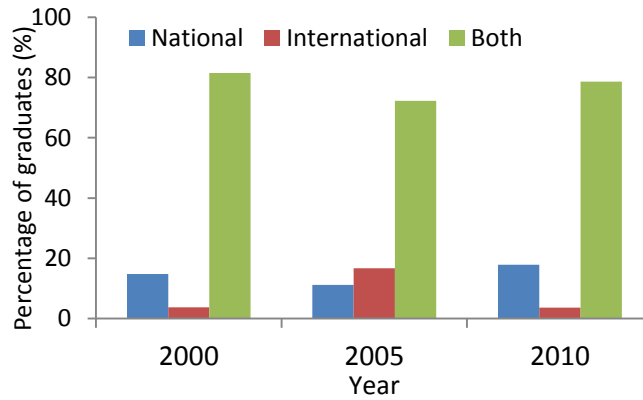
13. The institution /organization /company name you work in:

.....

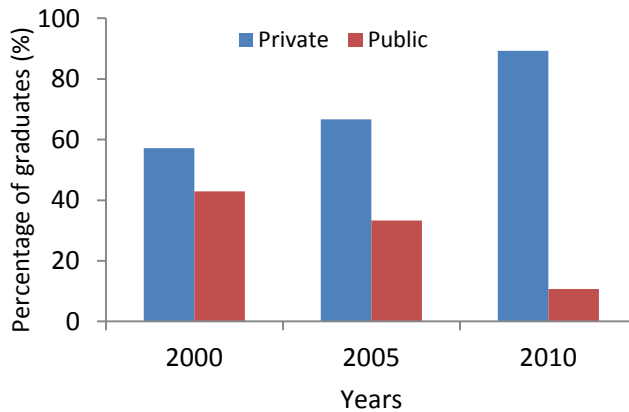
14. Your position at the institution/organization/company you work in:

.....

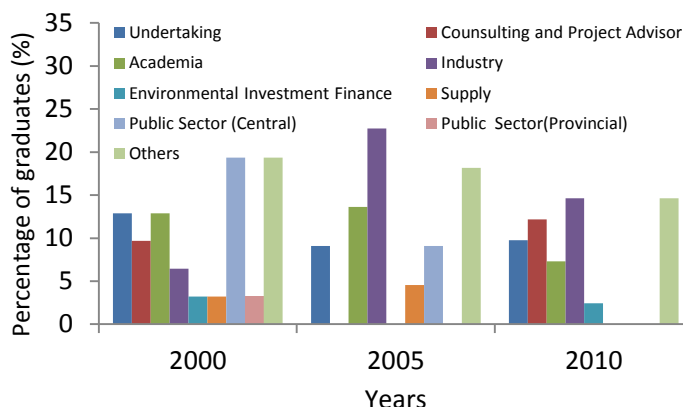
15. Does the institution/organization/company you work in, serve on a national or an international scale?



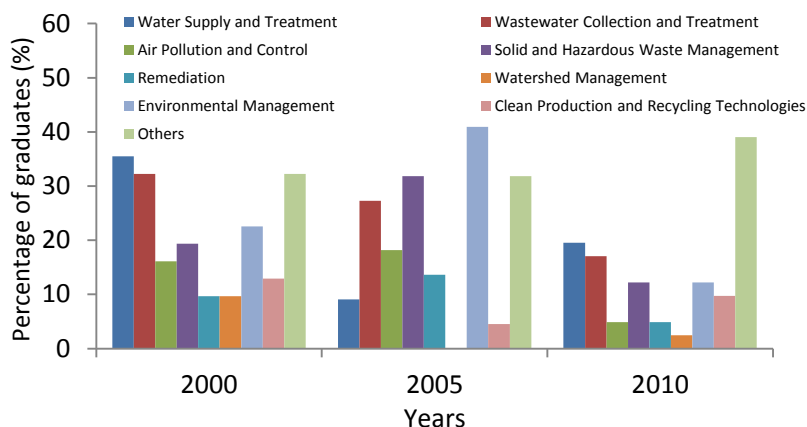
16. In which sector your institution/organization/company work in?



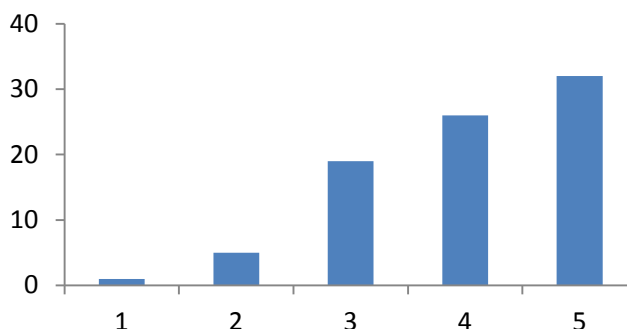
17. In which sector do you work as an environmental engineer?



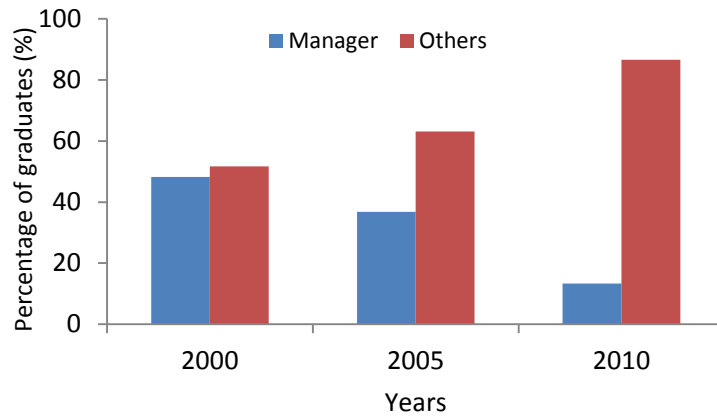
18. Which of the following issues do you serve? (You can choose more than one options)



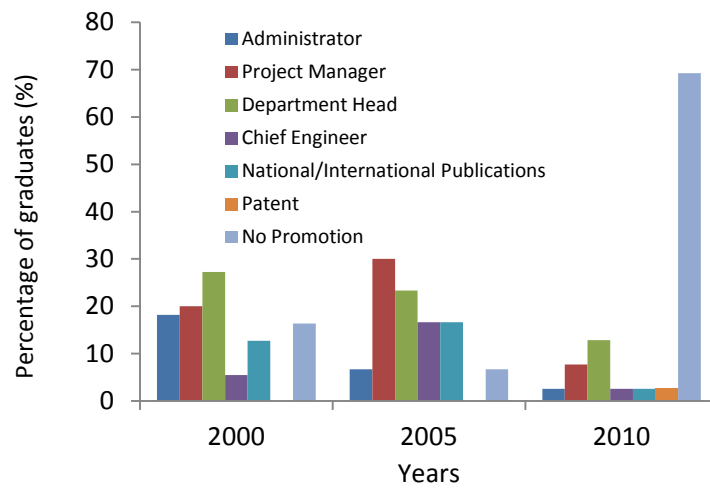
19. Please indicate the degree of contribution of your engineering education to your career. (1 is the lowest, 5 the highest)



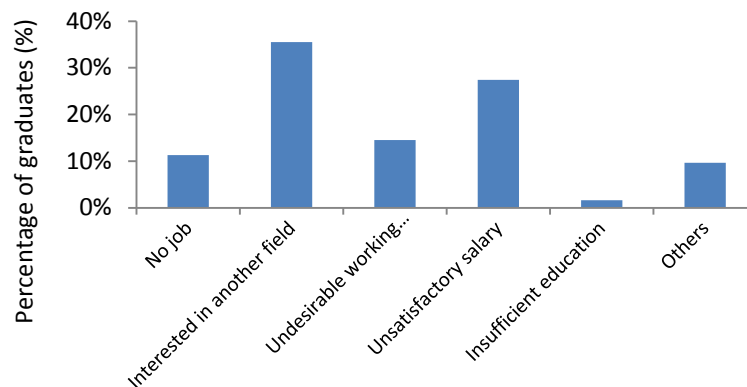
20. Are you working at management level?



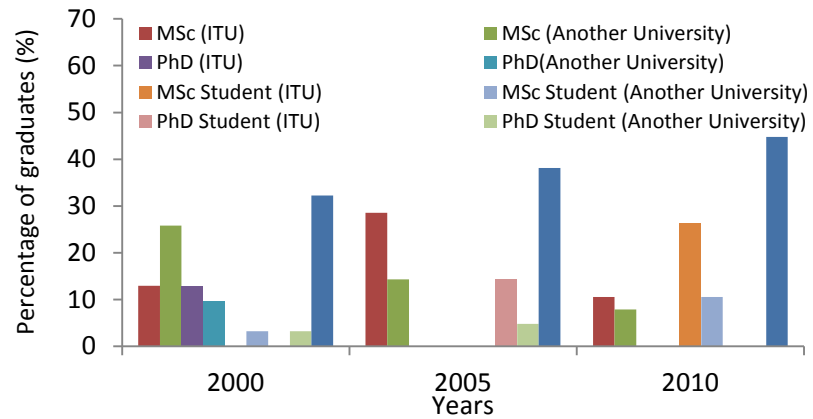
21. Please indicate the promotions you received in your career after graduation.



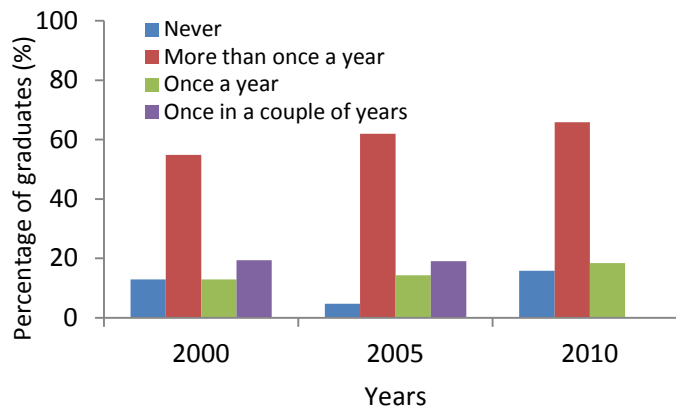
22. Which of the following explain your reason for not working in environmental engineering or in a related field.



23. Do you have a graduate degree?

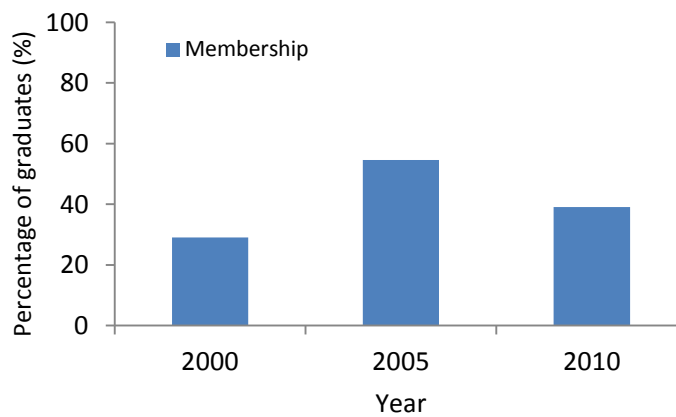


24. How often did you participate in activities like seminars, conferences, symposiums, workshops for self-improvement after graduation?

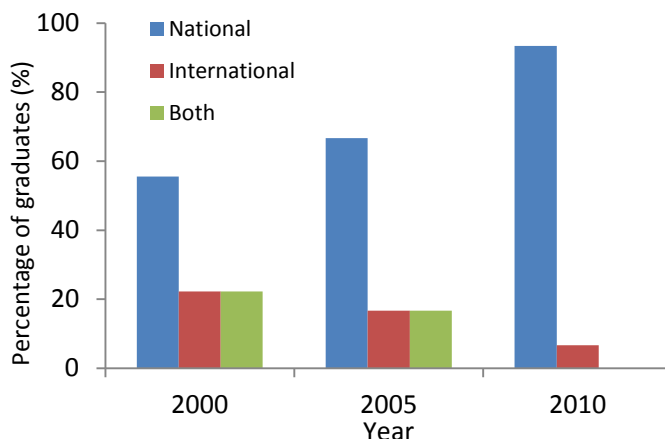


25. Please indicate your national and/or international memberships relevant to your profession

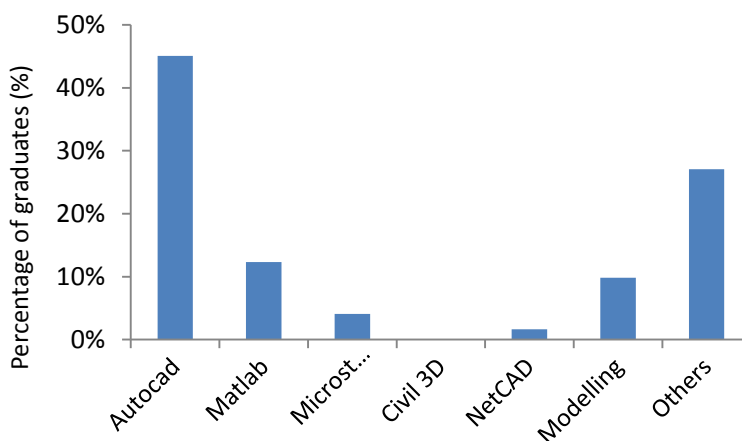
Alumni who have a membership



Alumni who have national and/or international membership



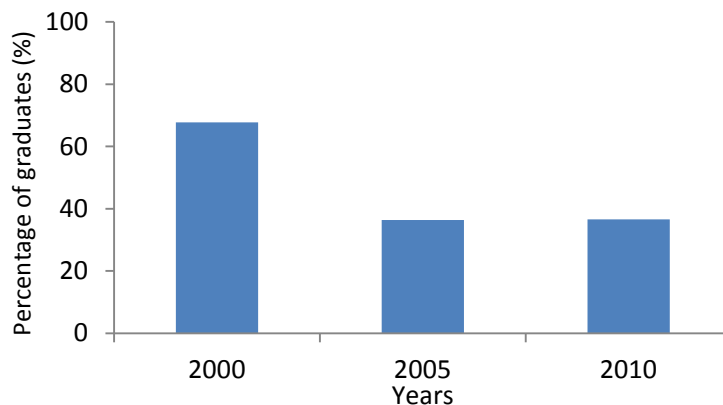
26. Which softwares have you learnt during your undergraduate education?



27. Which softwares have you learnt after you graduate?

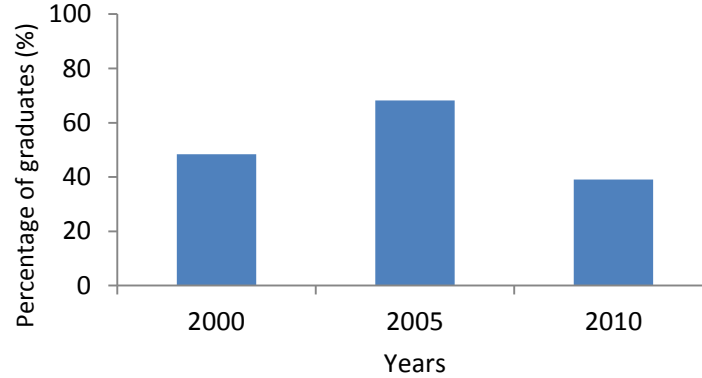
- Autocad
 Matlab
 Microstation
 Civil 3D
 NetCAD
 Modelling softwares
 Other.....

Alumni who learned a software after graduation



28. Please indicate the certificates you obtained after you graduate:

Alumni who earned a professional certificate after graduation



The professional certificates alumni earned after graduation

- *B Class Occupational Safety Expert*
- *Occupational Health and Safety Risk Assessment and Evaluation*
- *Environmental Impact Assessment*
- *Advanced Course on Environmental Biotechnology (Delft University of Technology)*
- *Course on Wastewater Treatment*
- *Water managements on coastal areas(ODTU, Ankara)*
- *ISO14000*
- *WASTE WATER MANAGEMENT*
- *ISO 9001*
- *ISO14001*
- *OHSAS 18001 Occupational Health and Safety Management System*
- *Environmental Auditor*
- *DSI Sediment Transportation Technology*
- *MOHID (Water Quality Modeling Program)*
- *DELT3D*
- *Integrated System Internal Auditor (BVQI-Loyds)*
- *C Class Occupational Safety Expert*
- *MSA Education, Bosch A.Ş.*
- *ISO 22000 Lead Auditor*
- *ISO 14025, Internal Auditor*
- *ISO 14001, Lead Auditor*
- *NEBOSH Int. Gen. Certificate*
- *TS ISO EN/IEC 17025 Laboratory Internal Auditor Course*
- *TS ISO EN/IEC 17025 Accreditation of Experiment and Calibration Laboratories*
- *Zer0-M Wastewater Management Course for Sustainable Development, TÜBİTAK MAM*

29. Which tools you are using for research in your professional career to get information after you graduate? (You can choose more than one option)

- Electronic sources
- Journal/Book
- Personal communication
- Other

Percentage of the graduates using research tools for their professional career

